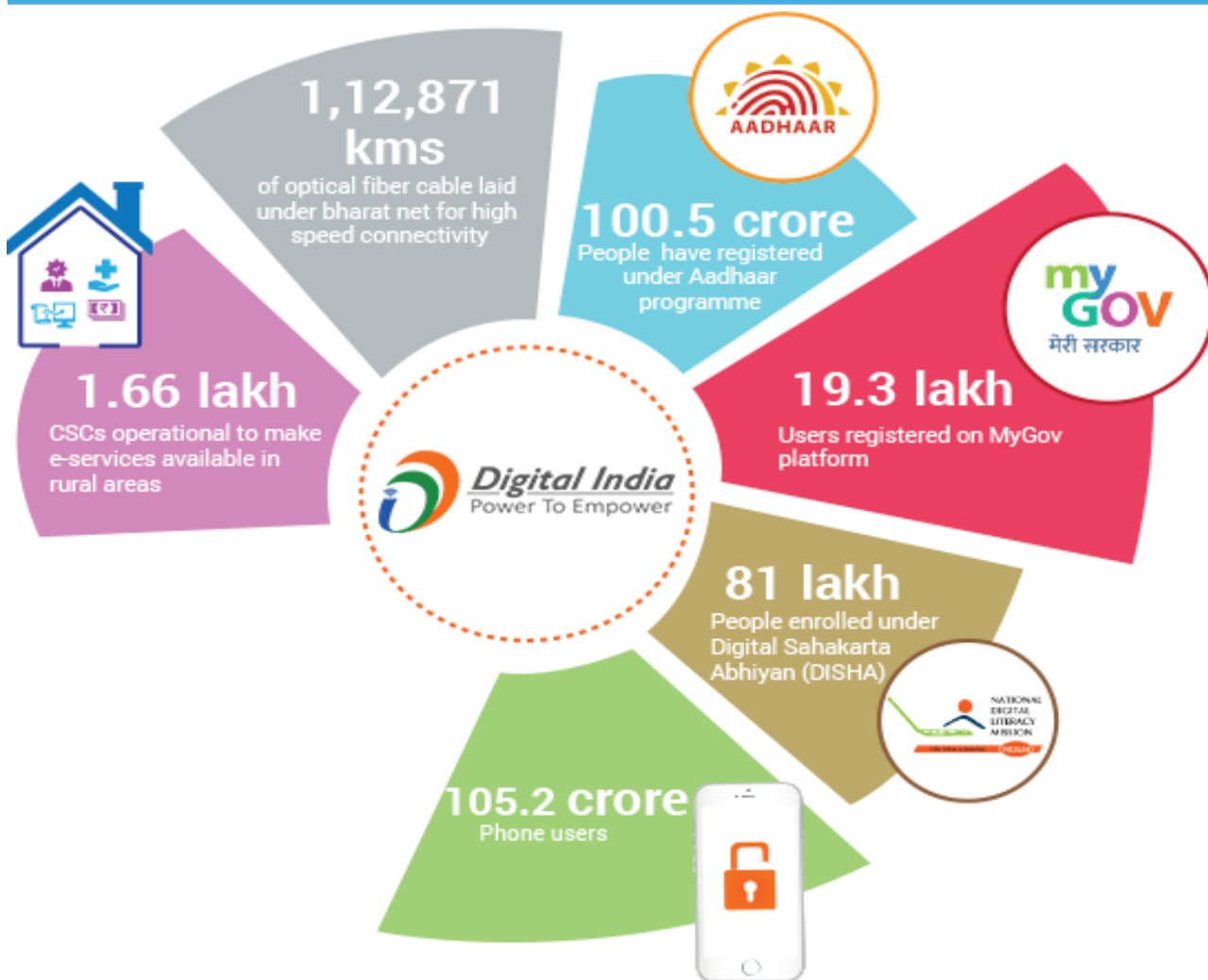


# Carpe Diem

A daily compendium of must visit links from The Hindu | Indian Express | Live Mint | PIB | PRS | AIR | STV | LSTV



[ISSUES AND ANALYSIS](#)



[News Insight](#)



[MAINS QUESTIONS](#)



[VIDEO GALLERY](#)



[INTERVIEW  
RESOURCES](#)



[TEST SERIES](#)

## Editorials from- The Hindu, The Indian Express, Live Mint

The Hindu-

### ➤ **Failures of inference**

Liberalism is complicit in generating the crisis of contemporary populism

The Hindu-

### ➤ **Should the four SC judges have dissented publicly?**

It is their duty as Supreme Court judges to protect the Constitution and democracy

Indian Express-

### ➤ **Transparent Marking**

All data on education outcomes must be in public, not just the processed ones

Indian Express -

### ➤ **Stateless in Assam**

Thousands could be declared non-citizens when the National Register of Citizens is finalised. Since their deportation is an almost impossible option, the focus will be on the detention policy.

## National

- The Hindu-  
**China's rise a big disruption, says Jaishankar**  
Navy chiefs too flag Chinese assertiveness in the Indo-Pacific
- The Hindu-  
**Report highlights India's digital divide**  
Rural Kerala frontrunner in Internet access, rural Bengal at the bottom of the heap
- The Hindu-  
**'Coastal coal transportation to double'**  
Freightage set to jump to 63 mtpa by fiscal 2023, once bottlenecks ease: CRISIL
- Indian Express Explained-  
**ASER 2017 — The Wedge: More girls have bank accounts, boys operate them better**  
What explains this sudden drop? Why is it that while there's little to separate the genders while in school, the girls seem less prepared for real-world situations?
- Live mint-  
**States ask centre to release more funds for key govt schemes**  
States demand widening the divisible pool of resources to include cesses or surcharges, or alternatively, replacing them with tax levy to ensure that the states get a share of these revenues

## ECONOMY

- The Hindu-  
**'Coastal coal transportation to double'**  
Freightage set to jump to 63 mtpa by fiscal 2023, once bottlenecks ease: CRISIL
- Live mint-  
**Can Budget 2018 address slowdown in rural economy?**  
Exercise also aims to spur value addition, innovation
- Indian Express-  
**'Govt. to help diversify export basket further'**  
Steps to make India F&B hub: Prabhu

## Multimedia-Videos

- Rajya Sabha TV-  
**Security Scan : India-Israel Strategic Alliance**



To watch: click on the Link/Picture.

## All India Radio

- **Spotlight: A discussion on Growth in Industrial Output**



To Listen- click on the link/picture.

# abhimanu IAS

## 360° Preparation Institute

### INTERVIEW PROGRAM

Admissions Open !

### IAS (Pre) Smart Course

Starting 7<sup>th</sup> Feb, 2018

### IAS 2018

#### Test Series

Starting 7<sup>th</sup> Jan, 2018

### State Civil Services

(HAS/PCS/HCS)

Starting 7<sup>th</sup> Feb, 2018

# IAS 2019

(PRE cum MAINS)  
(Regular & Weekend Batches)

Starting  
7<sup>th</sup> Jan, 2018

## ABHIPEDIA

AN EASY WAY TO UPDATE

- TEST SERIES • NEWS INSIGHT
- VIDEO GALLERY • MAINS QUESTION
- ISSUES AND ANALYSIS • INTERVIEW RESOURCES

Register FREE at

[www.abhimanuias.com/abhipedia](http://www.abhimanuias.com/abhipedia)



### DLP (DISTANCE LEARNING PROGRAM)

- Comprehensive GS Study Material • Pre & Mains Test Series
- Online Support System

Regular 1 Year Courses available Targeting  
IAS 2019-2020

For more info call at 95011-14020

Patiala 9501110158 | Shimla 9857128428 | Hoshiarpur 9501130749 | Kurukshetra 9991196777  
 Jalandhar 9888603034 | Ludhiana 9814145471 | Amritsar 9888560523 | Yamunanagar 9215544921

**ABHIMANU IAS STUDY GROUP** (A Unit of Abhimanu Visions (P) Ltd.)

Corp. Office: Dainik Bhaskar Building, 2nd Floor, Sector 25-D, Chandigarh.

Tel: 0172- 4956000-20 M: 95011-14020, Email: [info@abhimanu.com](mailto:info@abhimanu.com)

Like Abhimanu's IAS Facebook Page for exp. Sharing and free tips on preparation

[www.abhimanuias.com](http://www.abhimanuias.com)

A Tradition  
of  
Success

